

---

# President's Interfaith and Community Service Campus Challenge Webinar Series

Co-sponsored by the Department of Education, the Corporation for National and Community Service, and Interfaith Youth Core

*Session 1 – May 26, 2011, 3pm EST*

---

*The webinar will start shortly – please join the conference call at 888-989-9853, password BEDELL.*



Welcome from Joshua DuBois



**Executive Director of the White House Office of Faith-based and  
Neighborhood Partnerships**

Welcome from Brenda Girton-Mitchell

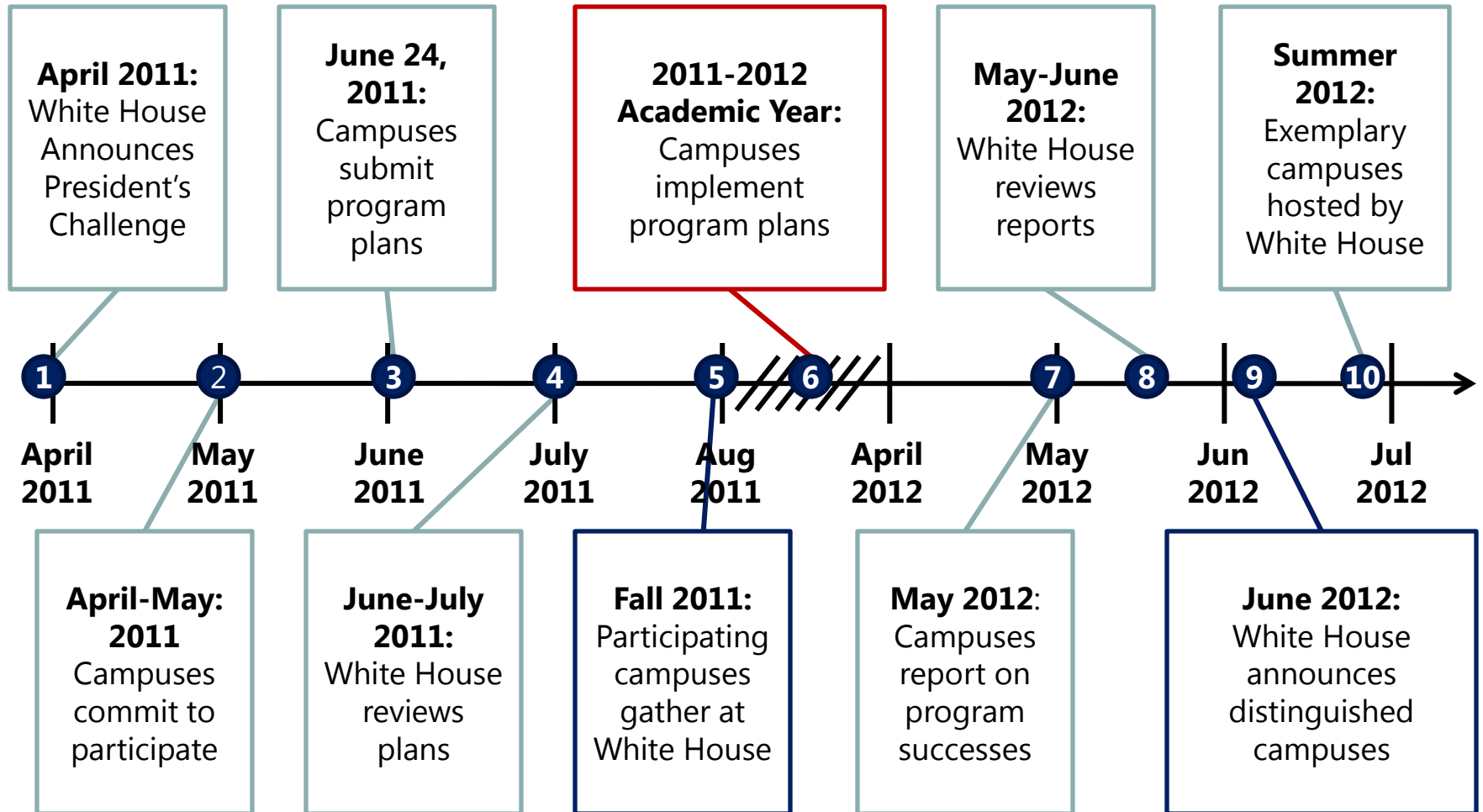


**Director of the Center for Faith-based and Neighborhood Partnerships,  
Department of Education**


# Today's agenda...

- I. Program Timeline Overview
- II. Planning Template Overview
- III. Starting Your Planning Process
  - I. Institution-Wide Commitment
  - II. Sustainability
- IV. Questions

# President's Challenge Program Timeline



# President's Challenge Program Planning Template



**The President's Interfaith and Community Service Campus Challenge**  
Advancing Interfaith Cooperation and Community Service  
In Higher Education

The following is the planning template for the *President's Interfaith and Community Service Campus Challenge*. Campuses submitting service plans should answer the following questions within the word limits outlined below. The White House is looking forward to the creativity of institutions in designing their plans, including those that will expand and innovate upon existing programming.

Interested institutions should indicate their intent to participate in the *President's Interfaith and Community Service Campus Challenge* by emailing [whpartnerships@who.eop.gov](mailto:whpartnerships@who.eop.gov) by May 13, 2011.

Service plans should be submitted to [whpartnerships@who.eop.gov](mailto:whpartnerships@who.eop.gov) by no later than June 24, 2011.

**Part I: Institutional Overview**

1. Institution Name:
2. Institution City/State:
3. President's Name and Contact Information:
4. Institution's Challenge Lead Name, Title and Contact Information:

## Parts I & II; Part V:

- Your institution
- Who are your partners?
- Is there institution-wide commitment to this initiative?
- How will you know you have been successful?
- How is your program sustainable?

To be discussed further  
later in this session!

# Program Planning Template, cont.



## Part III: Interfaith Service

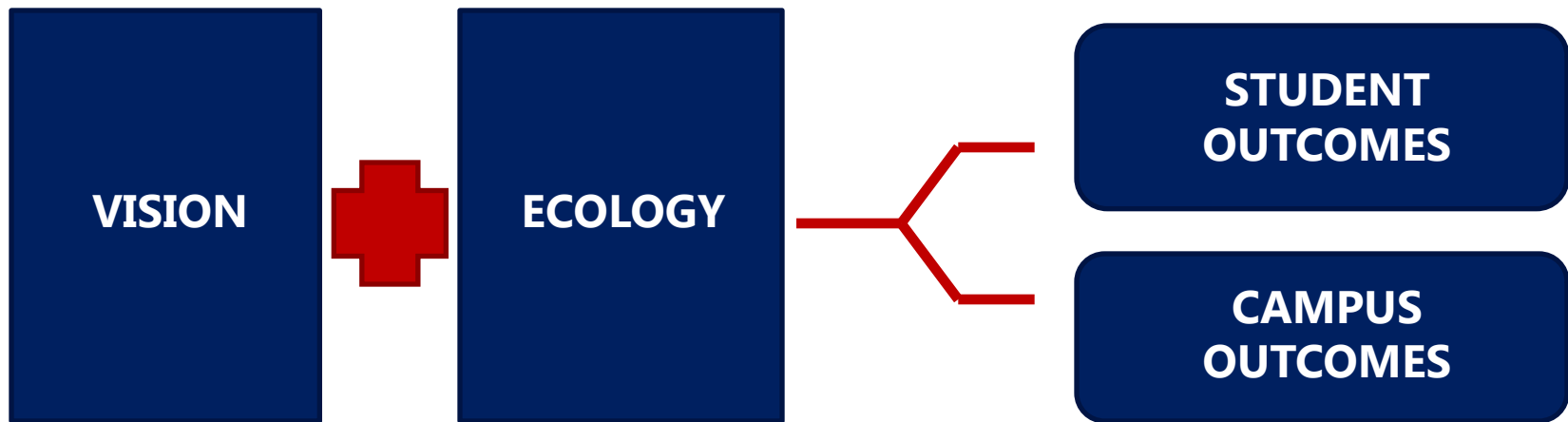
- What is your service issue & why?
- What will your impact be?
- How is it interfaith?

## Part IV: Interfaith Engagement

- How will you build interfaith cooperation?
- What will your impact be?
- How will it integrate with your service initiative?

To be discussed further in  
Webinars 2 & 3!

# IFYC's Campus Impact Framework



# Vision



A **vision** of interfaith cooperation on campus is marked by three distinguishing features:



## **Why now?**

---

- Religious bigotry
- Religious conflict
- Religious ignorance
- National priority

## **Why us?**

---

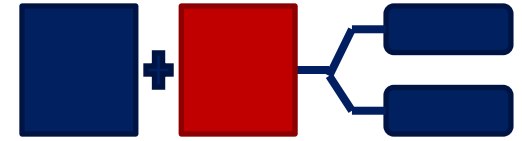
- Connection to mission
- Education for the modern world
- Cultivating global citizens

## **What's success?**

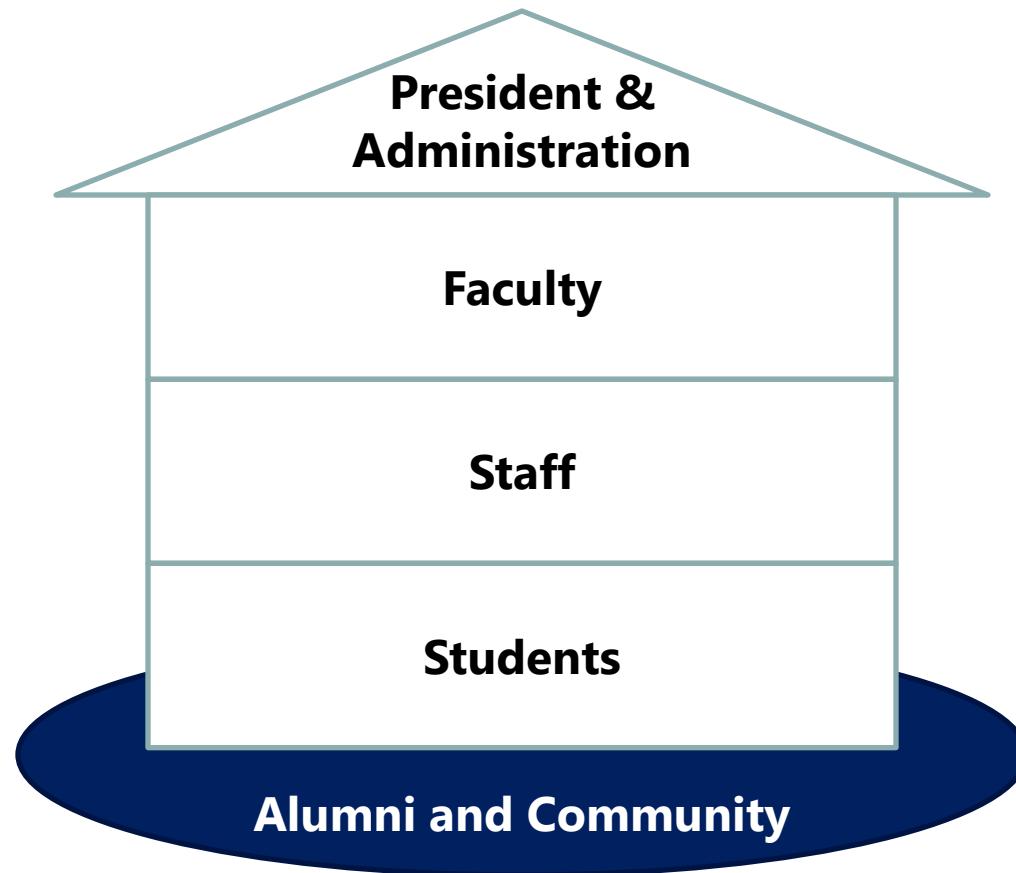
---

- Cross-campus; high level
- High participation
- Action oriented
- Measurable

# Ecology



Stakeholders must articulate this vision across the **ecology** of a campus, working across boundaries to sustain the positive engagement of *all* diversity on campus.

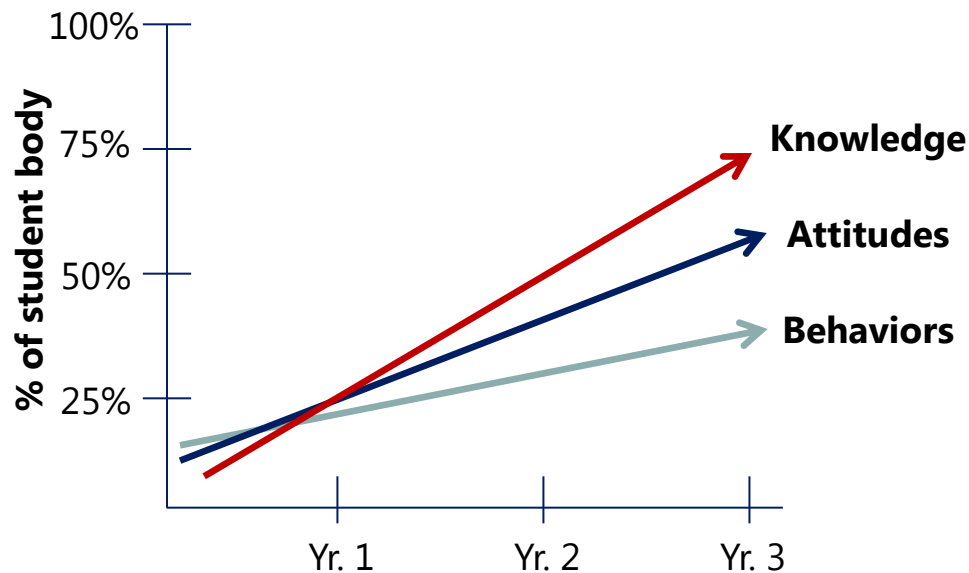


# Student Outcomes

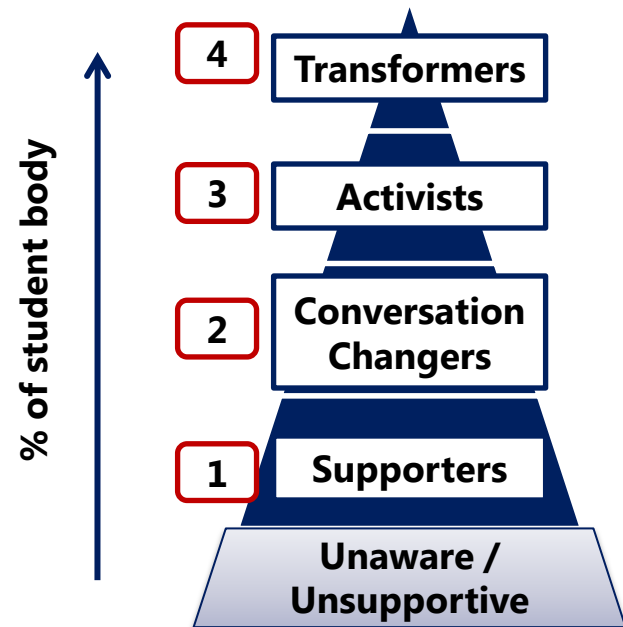


Student outcomes should demonstrate measurable change concerning student attitudes, knowledge, and behaviors concerning religious diversity and interfaith cooperation. They can also be linked to broader learning outcomes, such as engaging with broader diversity, civic engagement, fostering a sense of belonging, increasing self-knowledge, etc.

### Student Body Assessment



### Levels of Interfaith Leadership



# Campus Outcomes

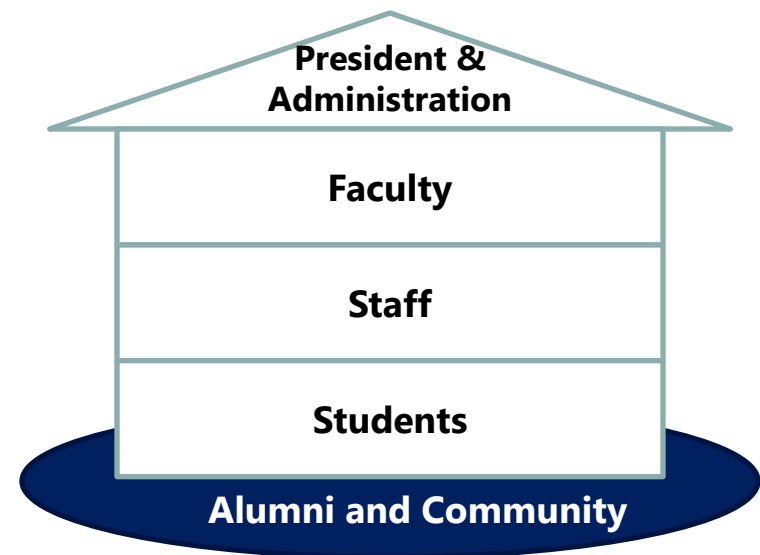


Linked to broader campus climate surveying around diversity, these draw focus not only to the presence of religious diversity but how various communities feel safe or are engaged.

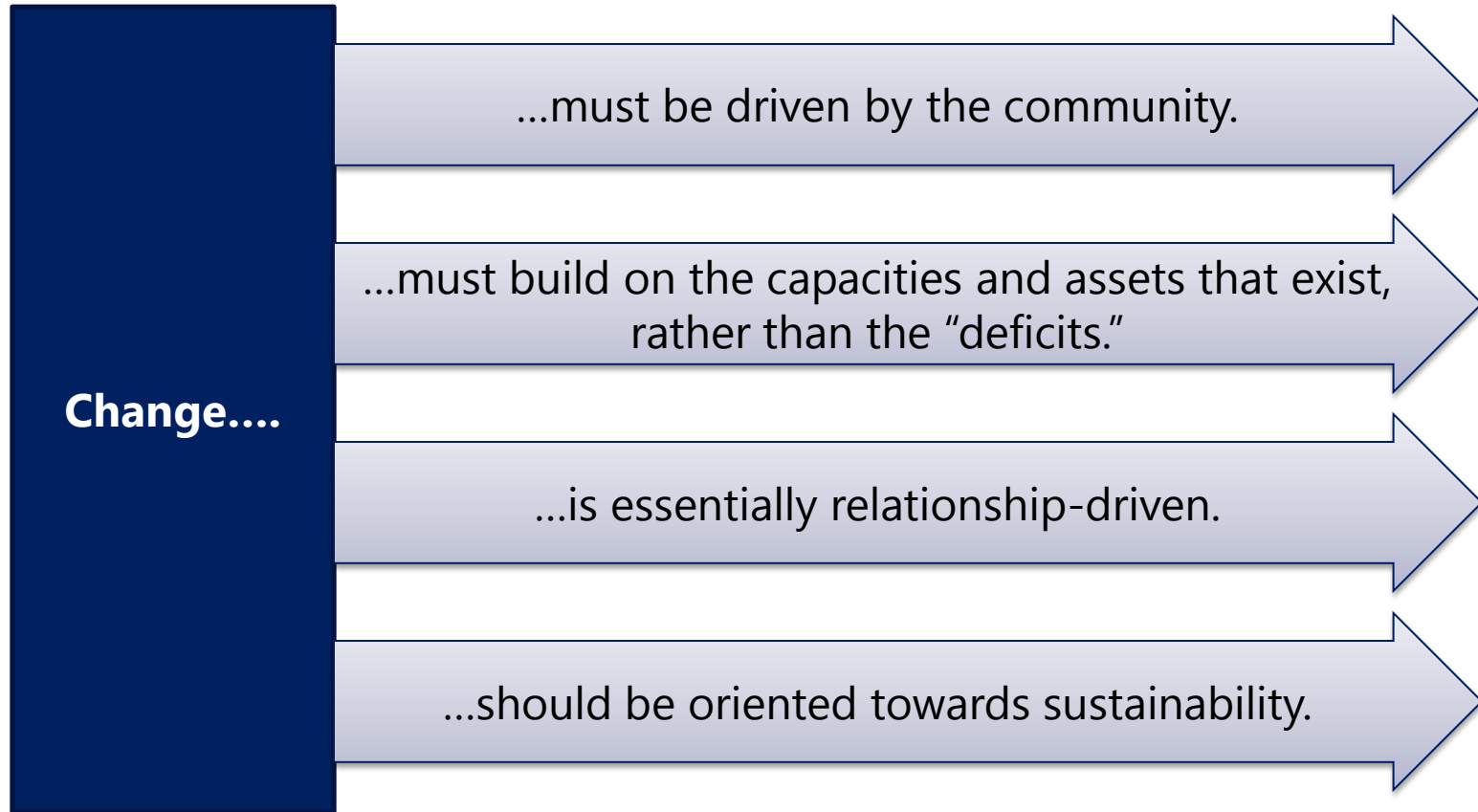
## Campus Climate Outcomes

- “My campus values religious pluralism”
- “My campus intentionally creates opportunities for me to meet people of different religious/philosophical identities”
- “My campus intentionally creates opportunities for people of different religious/philosophical identities to work together on issues of common concern”

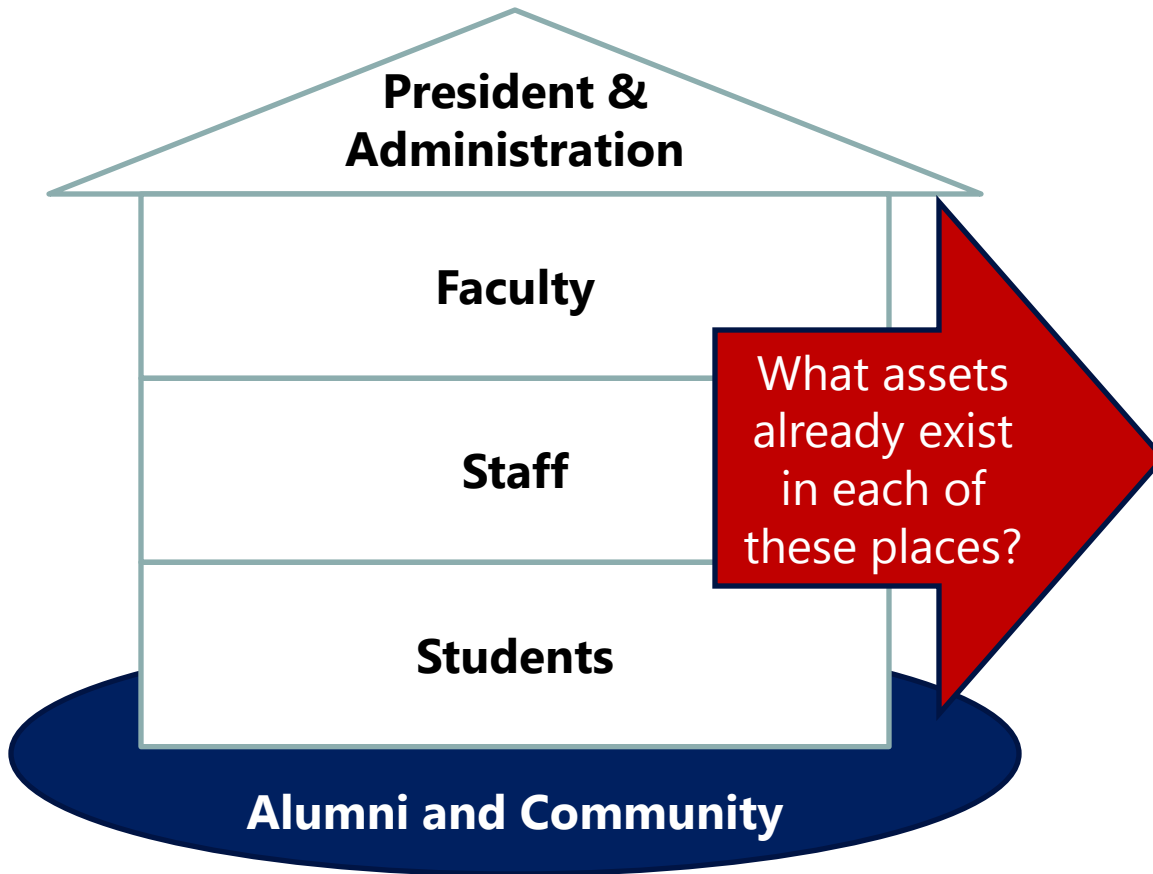
## Sustainability Structures



# Asset-based Community Development: Kretzmann and McKnight, 1993



# Identify assets on your campus...



- What impactful programs/courses do you have on campus?
- What relevant programs/courses do you have on campus?
- What are your existing institutional commitments?
- Which programs/initiatives are well-resourced?
- Who are the influential stakeholders that could support your work?

# Visit [www.ifyc.org/presidents-challenge](http://www.ifyc.org/presidents-challenge) for articles, reports and resources...

## Website



[www.ifyc.org/presidents-challenge](http://www.ifyc.org/presidents-challenge)

## Resources

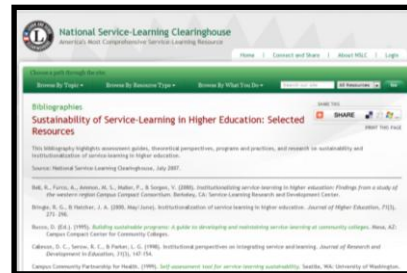


# Additional resources on sustainable programming...

## Resource

## Link

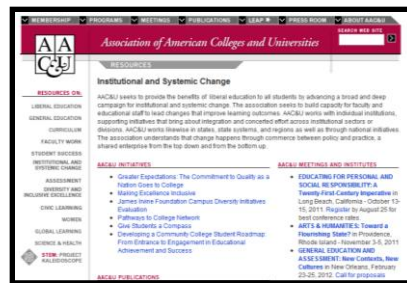
### National Service-Learning Clearinghouse



[http://www.servicelearning.org/instant\\_info/bibs/he\\_bibs/sustainable/index.php](http://www.servicelearning.org/instant_info/bibs/he_bibs/sustainable/index.php)

[http://www.servicelearning.org/instant\\_info/factsheets/he\\_facts/instructure](http://www.servicelearning.org/instant_info/factsheets/he_facts/instructure)

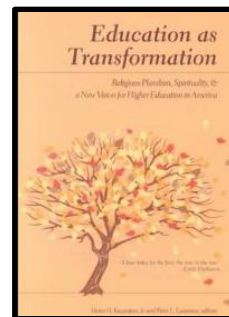
### American Association of Colleges & Universities



<http://aacu.org/resources/institutionalchange/index.cfm>

<http://aacu.org/resources/civicengagement/index.cfm>

### Education as Transformation



<http://www.peterlang.com/index.cfm?event=cmp.ccc.seitenstruktur.detailseiten&seitentyp=produkt&pk=46716&concordeid=69547>

Thank you for joining us!

# Questions?

Join the conversation by pushing \*1 on your phone keypad.

## **Future Webinar Info:**

1. Session 2, *Interfaith Service*: June 1
2. Session 3, *Interfaith Engagement*: June 13

Call-in and log-on information will be circulated in advance of each call.