
President's Interfaith and Community Service Campus Challenge Webinar Series

Co-sponsored by the Department of Education, the Corporation for National and Community Service, and Interfaith Youth Core

Session 3 – June 13, 2011, 3pm EST

The webinar will start shortly – please join the conference call at 888-324-0243, password BEDELL.



Welcome from Dr. Martha Kanter



Under Secretary of Education, U.S. Department of Education

Welcome from Eboo Patel



**Founder and President,
Interfaith Youth Core**

Today's Agenda

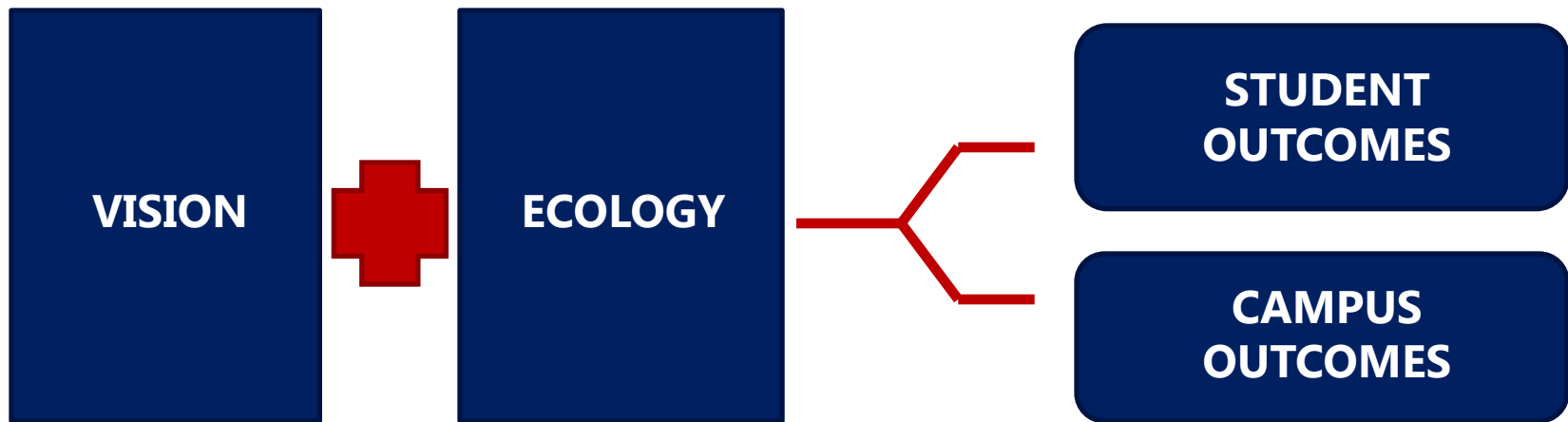
- I. The Importance of Interfaith Engagement
- II. Approaching Interfaith Engagement
- III. Methods of Interfaith Engagement
 - I. Capacity Building
 - II. Education
 - III. Communications
- IV. Final Tips & Recommendations
- V. Additional Resources
- VI. Questions

The Importance of Interfaith Engagement

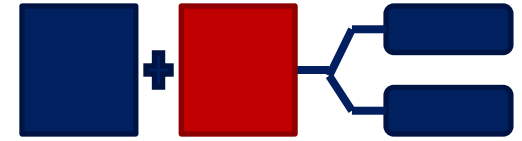


**Eboo Patel, Founder and President,
Interfaith Youth Core**

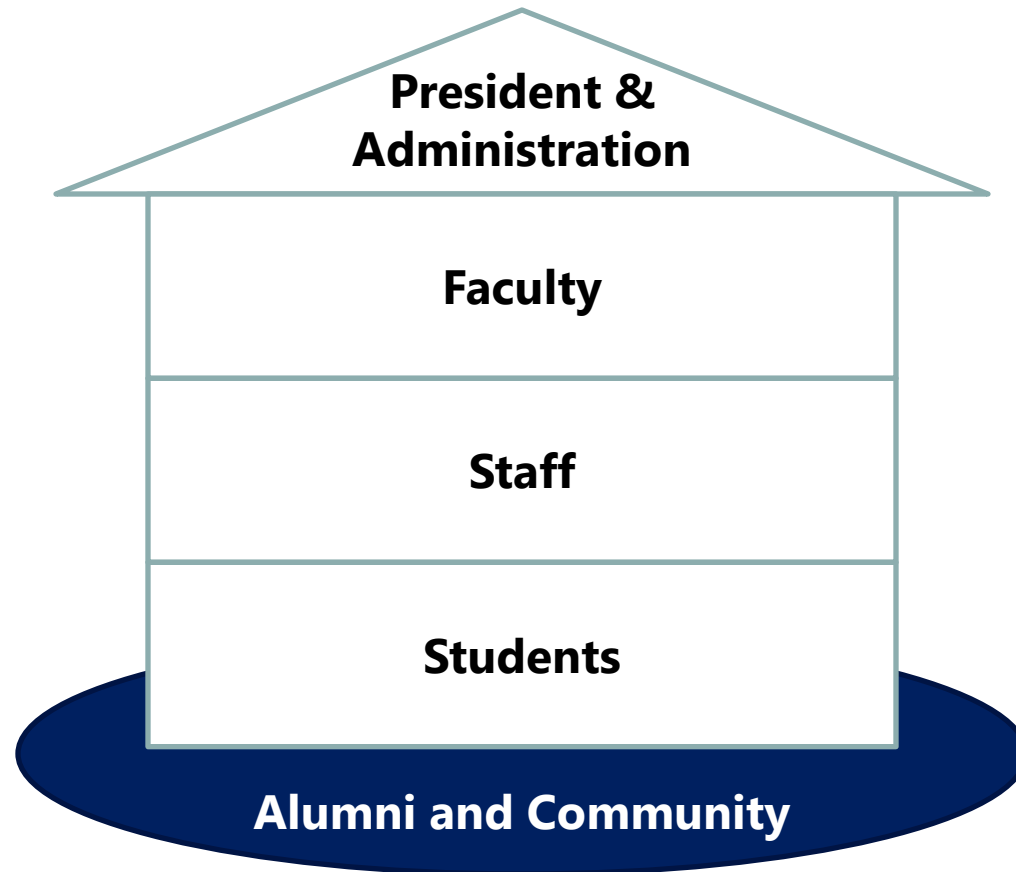
IFYC's Campus Impact Framework



Ecology



Stakeholders must articulate this vision across the **ecology** of a campus, working across boundaries to sustain the positive engagement of *all* diversity on campus.

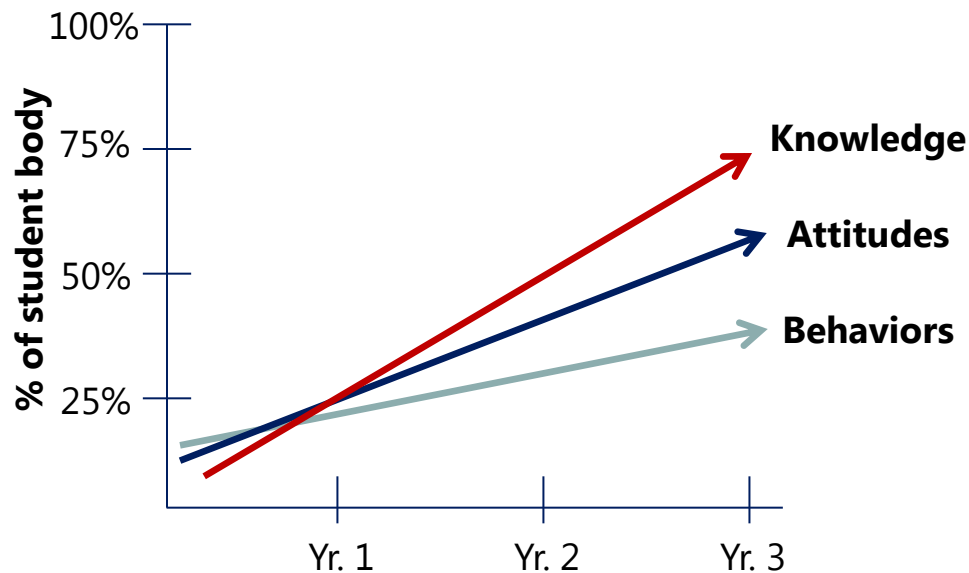


Student Outcomes

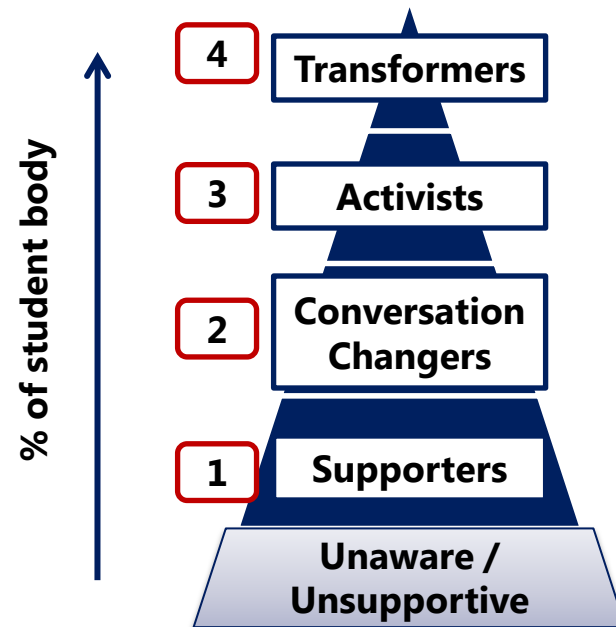


Student outcomes should demonstrate measurable change concerning student attitudes, knowledge, and behaviors concerning religious diversity and interfaith cooperation. They can also be linked to broader learning outcomes, such as engaging with broader diversity, civic engagement, fostering a sense of belonging, increasing self-knowledge, etc.

Student Body Assessment



Levels of Interfaith Leadership



Campus Outcomes

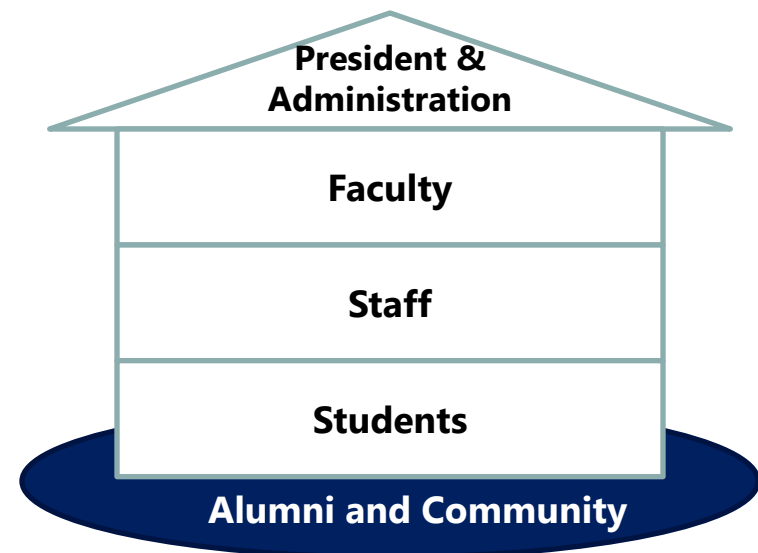


Linked to broader campus climate surveying around diversity, these draw focus not only to the presence of religious diversity but how various communities feel safe or are engaged.

Campus Climate Outcomes

- “My campus values religious pluralism”
- “My campus intentionally creates opportunities for me to meet people of different religious/philosophical identities”
- “My campus intentionally creates opportunities for people of different religious/philosophical identities to work together on issues of common concern”

Sustainability Structures



Interfaith Engagement: Capacity Building

Capacity Building efforts on campus provide students, faculty, and staff with the ability to positively engage religious and non-religious diversity on campus.

Examples include...



Faculty & staff professional development



Student interfaith leadership opportunities

Capacity Building in Action: Wellesley College



Peter Laurence, Ed.D.

Executive Director
The Education as
Transformation Project at
Wellesley College
www.educationastransformation.org

Interfaith Engagement Capacity Building at Wellesley College

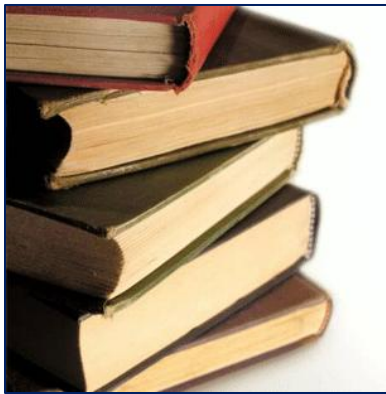


- Religious Life Team
- Training for Residence Directors
- Multifaith Student Council

Interfaith Engagement: Education

Educational initiatives cultivate appreciative knowledge about diverse religious and nonreligious identities, positively impacting attitudes and knowledge on diverse religious and nonreligious identity.

Examples include...



Innovative
coursework



Public
presentations or
programming



Community
engagement

Education Programming in Action: Penn State University



Penn State University Pasquerilla Center for Ethics & Religious Affairs

<http://studentaffairs.psu.edu/spiritual/>



Educational Interfaith Engagement at Penn State University

- First-Year Seminar Tours
- Interfaith Panels, Speakers, and Films
- Fellows Program

Interfaith Engagement: Communications

Communications initiatives demonstrate the institution's public commitment to interfaith cooperation on campus.

Examples include...



Large, public speeches
by influential campus
stakeholders



Mass or social media
coverage



Messaging in
institutional materials

Communications in Action: DePaul University



Nicholas Cable

DePaul University, Class of 2011
IFYC Fellow 2011

<http://depaulinterfaith.org/>

On Twitter: @Nic_Cable



Interfaith Engagement Communications at DePaul University

- Facebook, Twitter social media campaign
- Outreach to create personal relationships with campus groups, administration
- Used enthusiastic, consistent information to build “hype” around interfaith action

Final tips and recommendations...

- Integration with your service initiative is key
- Overlap between these programs is natural and a strength!
- Identify assets that you already have at your disposal (asset-based model)
- Collaboration between departments, programs and even institutions is highly encouraged
- Above all, plan towards making an impact!

Visit www.ifyc.org/presidents-challenge for articles, reports and resources...

Website



www.ifyc.org/presidents-challenge

Resources

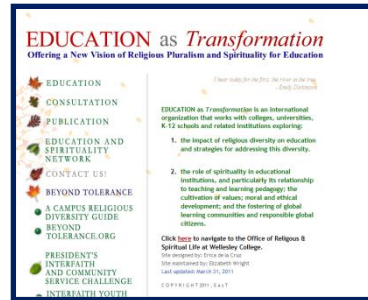


Additional resources on interfaith engagement...

Resource

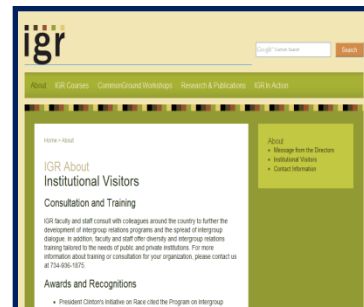
Link

Education as Transformation



<http://www.wellesley.edu/RelLife/transformation/>

InterGroup Relations



<http://www.igr.umich.edu/about/visitors>

Project on Civic Reflection



<http://www.civicreflection.org/>

Thank you for joining us!

Questions?

Join the conversation by pushing *1 on your phone keypad.

Program Plans are due on June 24,
2011 to

WHPartnerships@wh.eop.gov

Please write **EDPartners@ed.gov**
with any questions!